



FUSION AUSTRALIA

WEB: www.fusioncats.com
 EMAIL: info@fusioncats.com
 SKYPE: JAMES M GARD
 MOB: 0414 246 535

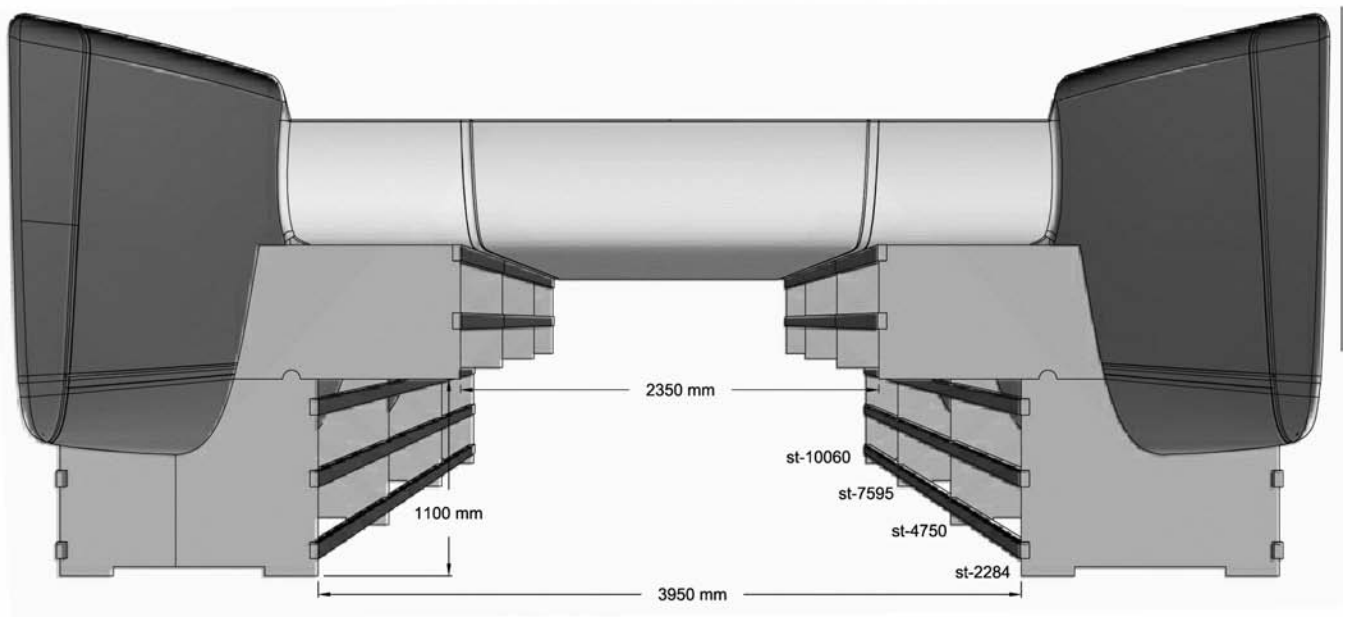
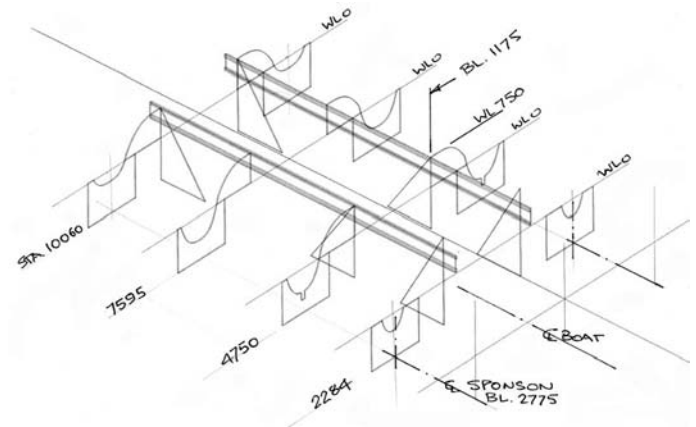
Assembly Overview for FUSION 40 Kit

a simple explanation of the Assembly Process

These few pages are to give you a better understanding of the simple Fusion Assembly procedures.

All technical Details, Plans, Suppliers Lists etc will be made available once your Kit is ordered.

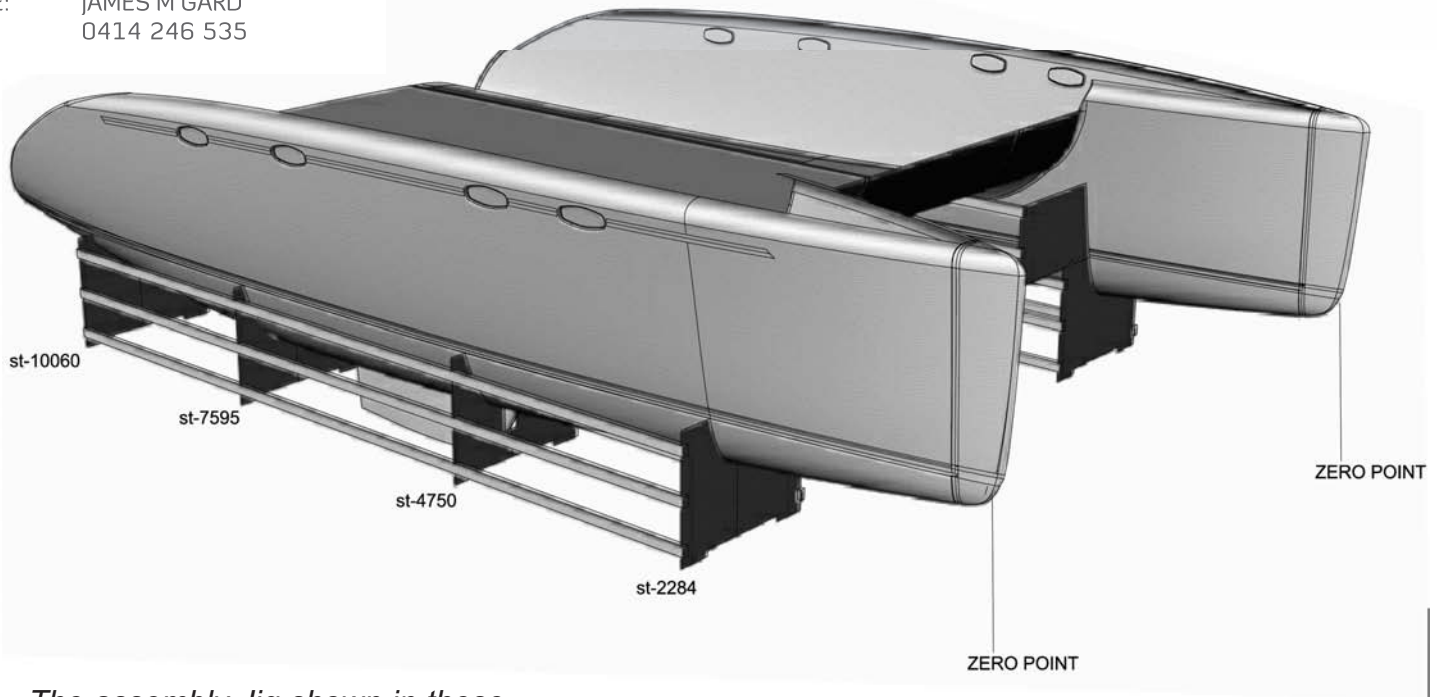
Assembly options available to you also include: members of the Fusion Team assembling in your facility, an Agent assembling to any stage, or simply using the Fusion 24/7 support System which provides the process manuals and builder knowledge.



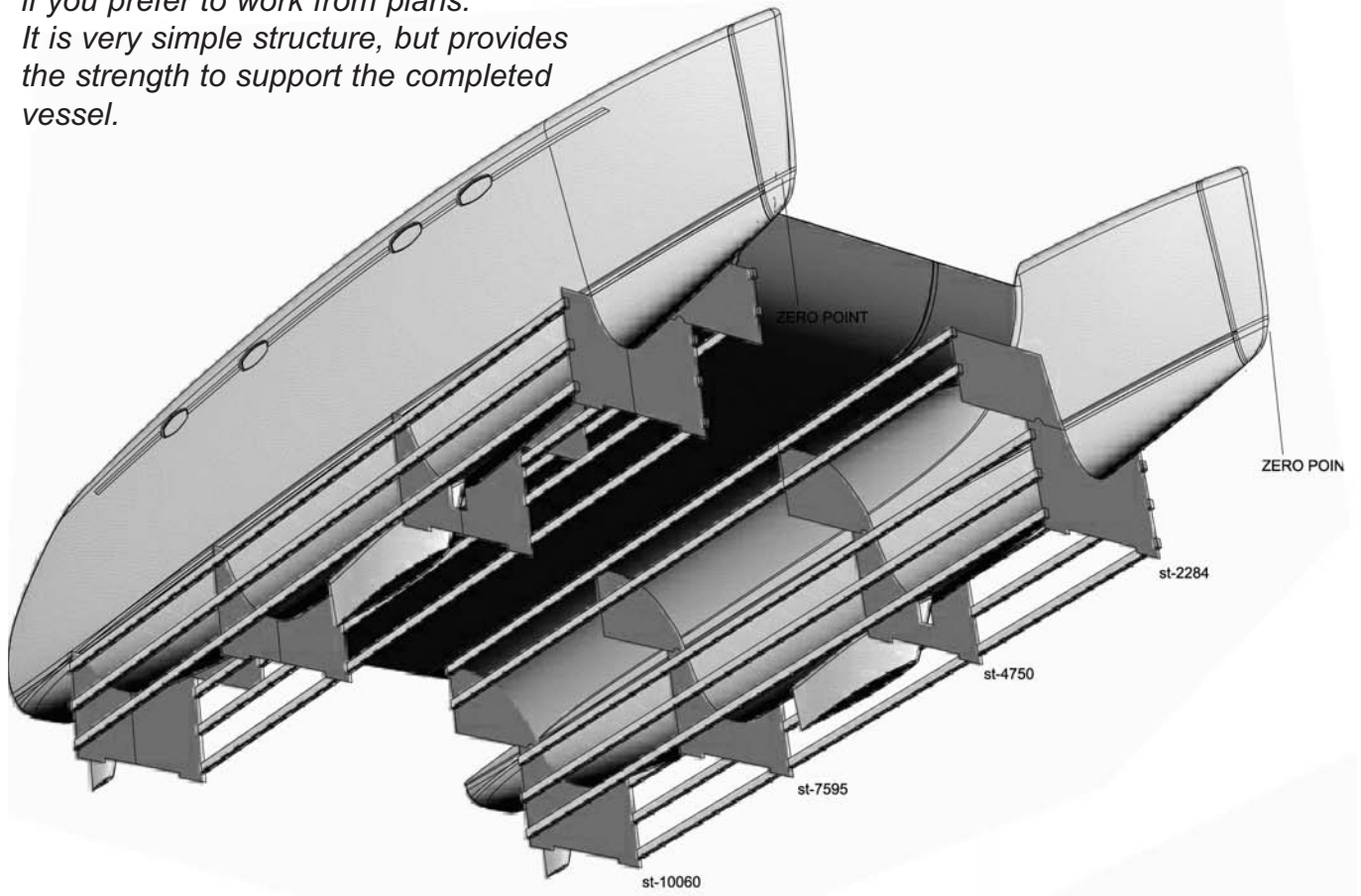


FUSION AUSTRALIA

WEB: www.fusioncats.com
 EMAIL: info@fusioncats.com
 SKYPE: JAMES M GARD
 MOB: 0414 246 535



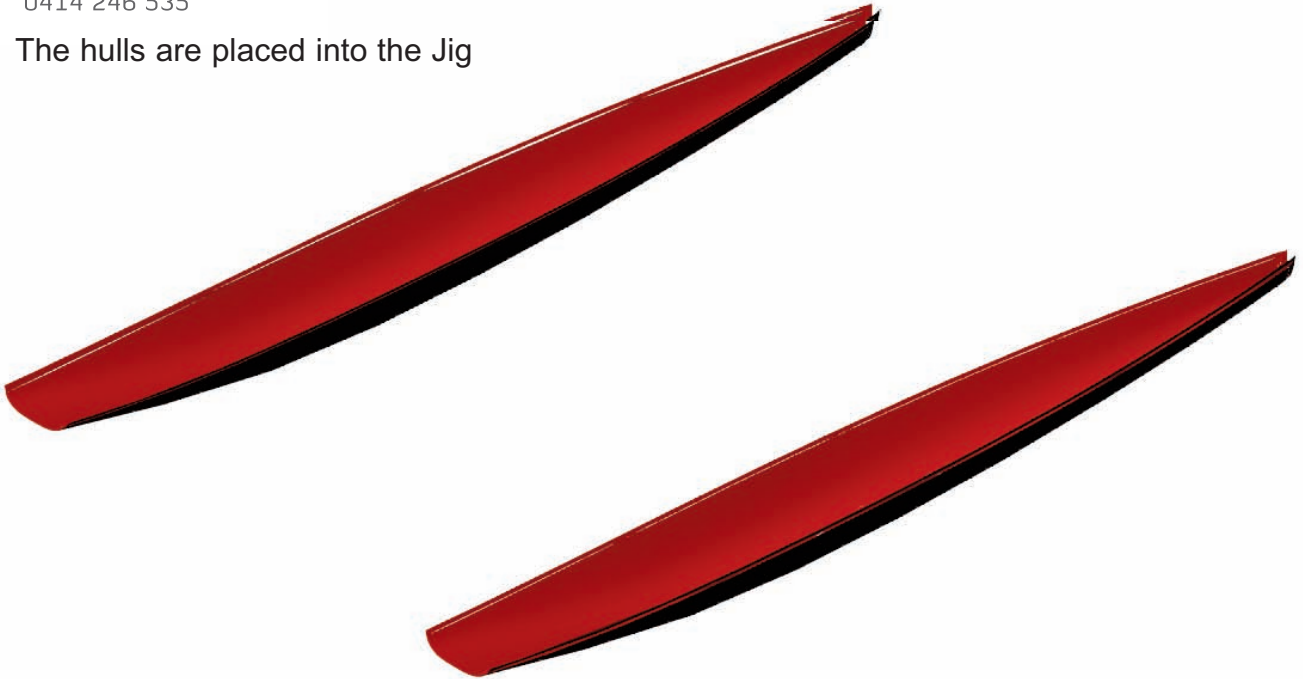
The assembly Jig shown in these three images, is provided as a dxf file for pre-routing and also as a dwg file if you prefer to work from plans. It is very simple structure, but provides the strength to support the completed vessel.



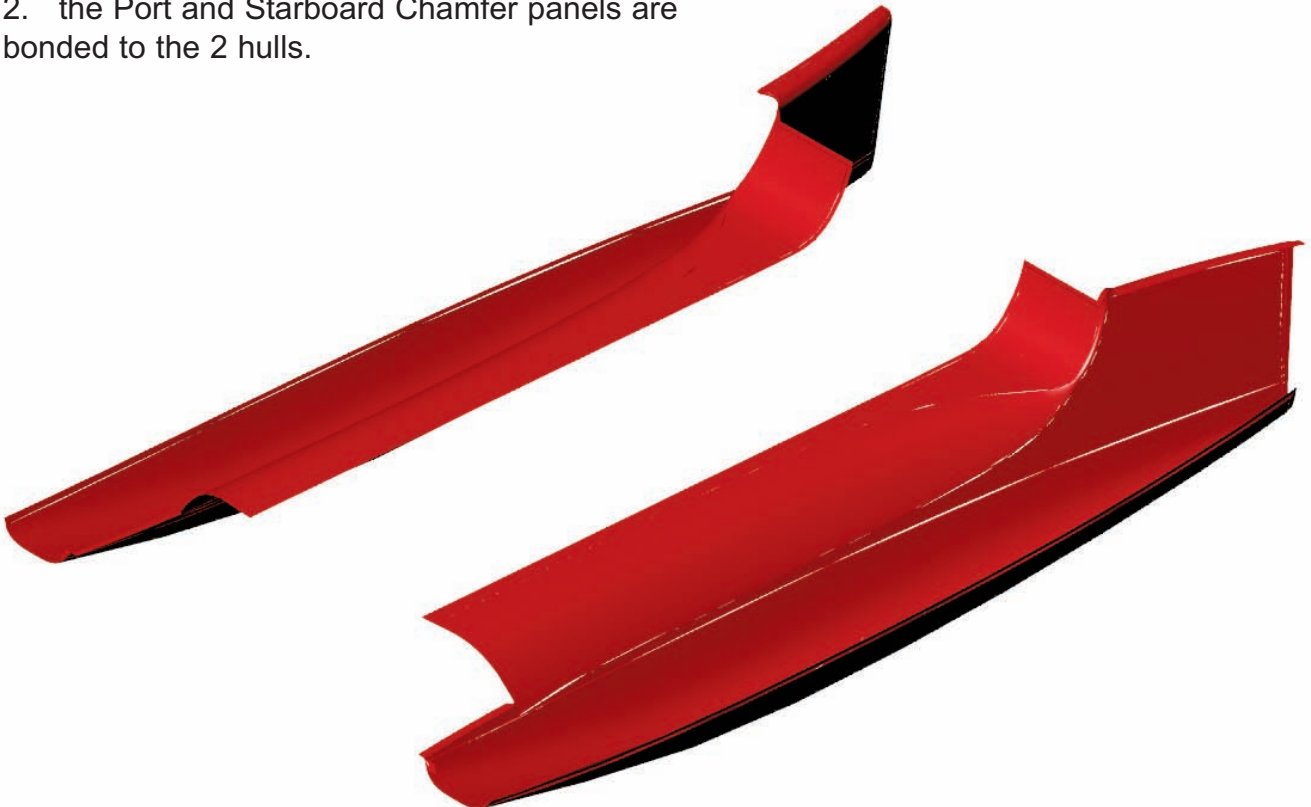
FUSION AUSTRALIA

WEB: www.fusioncats.com
EMAIL: info@fusioncats.com
SKYPE: JAMES M GARD
MOB: 0414 246 535

1. The hulls are placed into the Jig



2. the Port and Starboard Chamfer panels are bonded to the 2 hulls.



FUSION AUSTRALIA

WEB: www.fusioncats.com
EMAIL: info@fusioncats.com
SKYPE: JAMES M GARD
MOB: 0414 246 535

3. The Bridgedeck is next



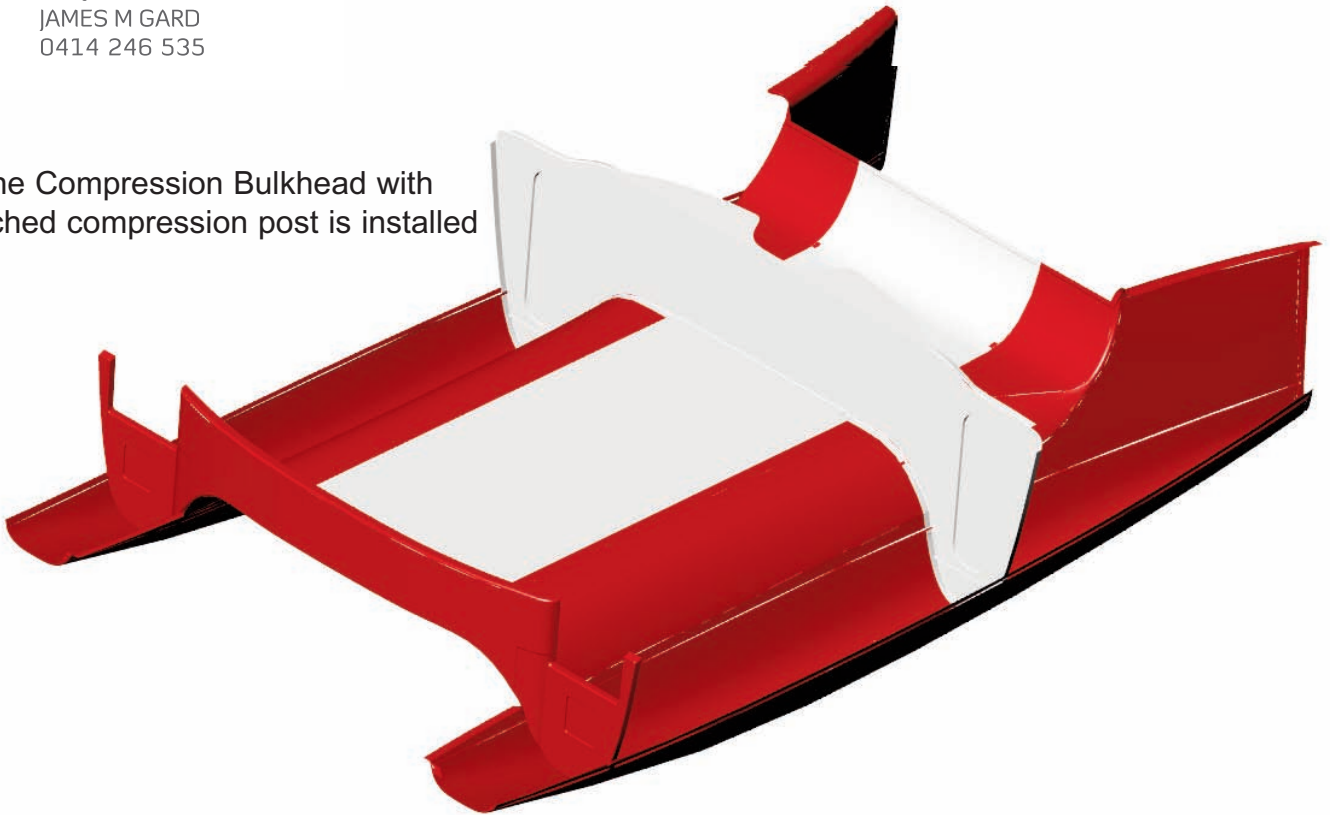
4. The Aft Beam goes in



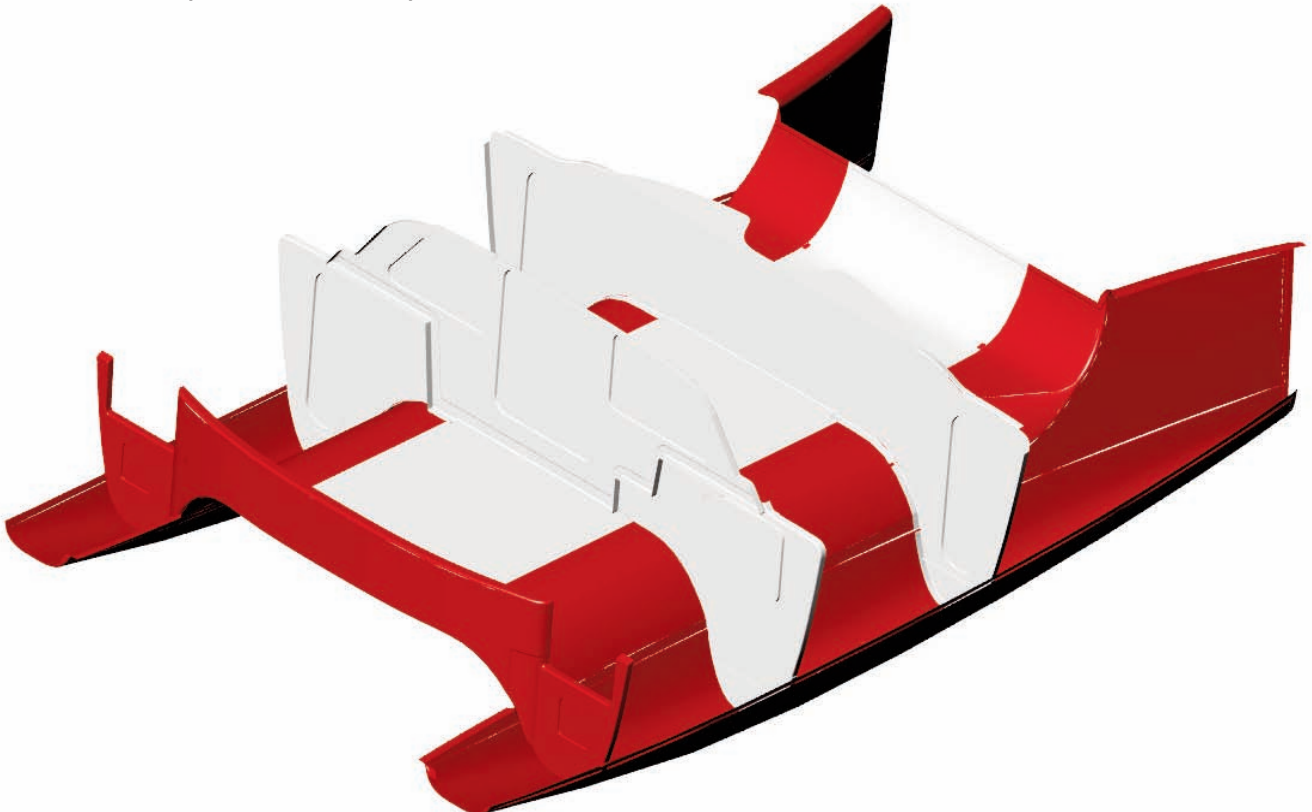
FUSION AUSTRALIA

WEB: www.fusioncats.com
EMAIL: info@fusioncats.com
SKYPE: JAMES M GARD
MOB: 0414 246 535

5. The Compression Bulkhead with attached compression post is installed



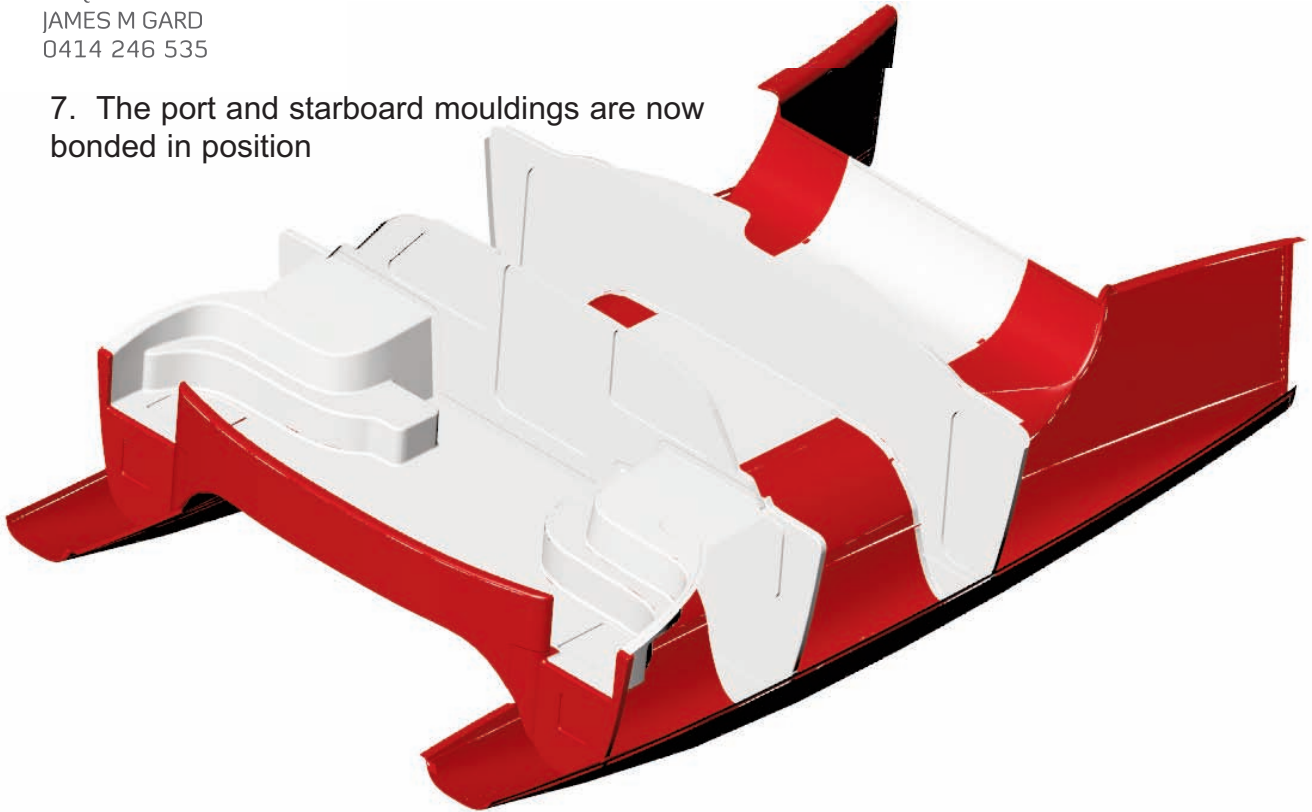
6. The Cockpit Bulkhead is positioned



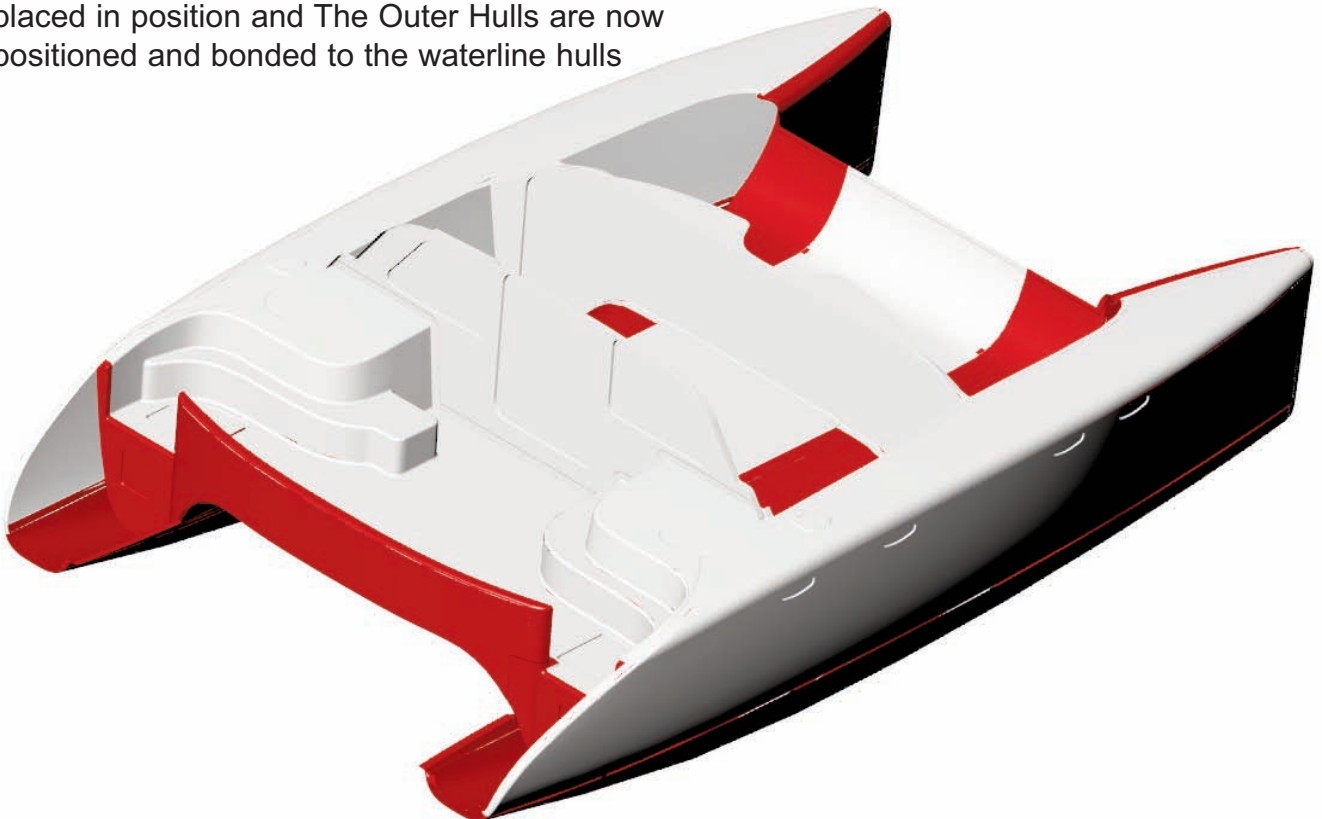
FUSION AUSTRALIA

WEB: www.fusioncats.com
EMAIL: info@fusioncats.com
SKYPE: JAMES M GARD
MOB: 0414 246 535

7. The port and starboard mouldings are now bonded in position



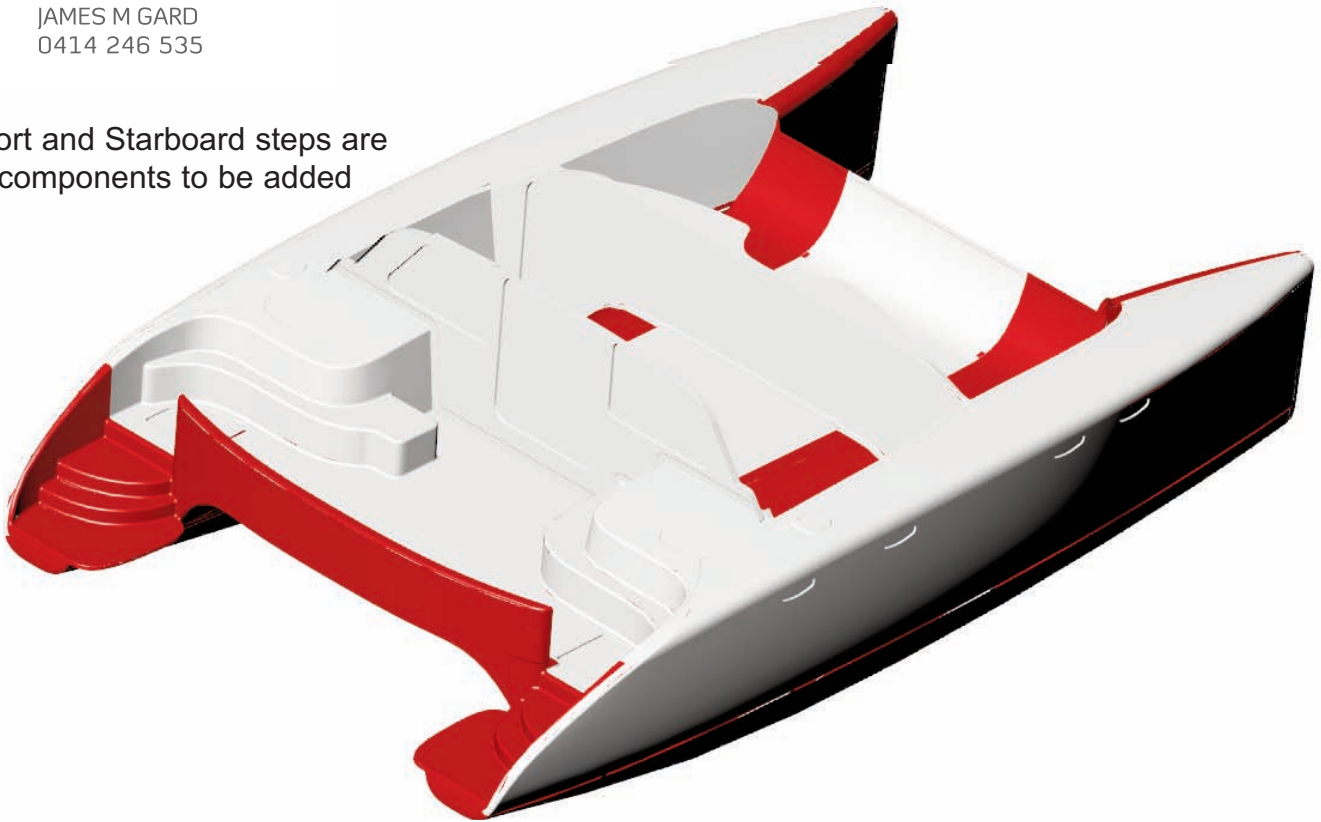
8. The supplied, pre-cut Flat Panels are placed in position and The Outer Hulls are now positioned and bonded to the waterline hulls



FUSION AUSTRALIA

WEB: www.fusioncats.com
EMAIL: info@fusioncats.com
SKYPE: JAMES M GARD
MOB: 0414 246 535

9. Port and Starboard steps are next components to be added



11. The Roof Centre section really shows the familiar line of the Fusion



FUSION AUSTRALIA

WEB: www.fusioncats.com
EMAIL: info@fusioncats.com
SKYPE: JAMES M GARD
MOB: 0414 246 535

12. The port and starboard roof sections bonded in place



13. The final large section to go onto the boat is the cockpit seat



FUSION AUSTRALIA

WEB: www.fusioncats.com
EMAIL: info@fusioncats.com
SKYPE: JAMES M GARD
MOB: 0414 246 535

14. Nose cones are fitted and the mini keels can be bonded either at the start or the finish of assembly



The moulded Fibreglass Catwalk and prodder can be installed once the forebeam is in place





FUSION AUSTRALIA

WEB: www.fusioncats.com
EMAIL: info@fusioncats.com
SKYPE: JAMES M GARD
MOB: 0414 246 535

The hardest decision I have been told is “What are we going to call her”?



Even at this stage, with motors steering and tanks, you have a vessel that will give you endless days of fun afloat



The material in this Publication is ©Copyright and its only permitted use is for the clients of Fusion Australia Pty Ltd and Fusion Marketing Ltd. Neither the publication or its contents are to be used without written permission for any other purpose.